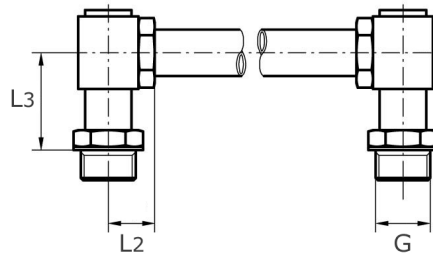


fluid-level indicator
for glass pipes
fig. 120

[short name: 120*](#)

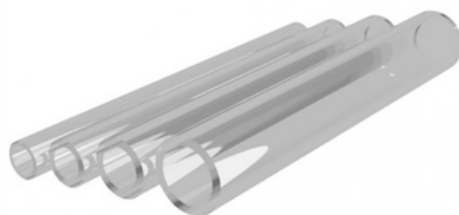


[technical product sheet](#)

G	Ausf	L2	L3	Art.-Nr.
1/2"	für Glas 13 mm	44	46	STAZ-12-4
3/4"	für Glas 16 mm	44	46	STAZ-34-4

available material: ask

Industrial valves > control technology > level indicators > stainless steel



Level indicator for liquids Fig. 120

for $\varnothing 13$ and $\varnothing 16$ Duran- or acrylic glass pipe

Temperature 200°C

Pressure range PN 25

Stainless steel 1.4571

Outer threads according to DIN ISO 228 Part 1