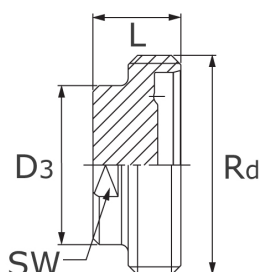


Závitové zaslepovací hrdlo

[zkratka označení: GBS\\*](#)

tvar A

DIN 11853-1/ DIN 11864-1

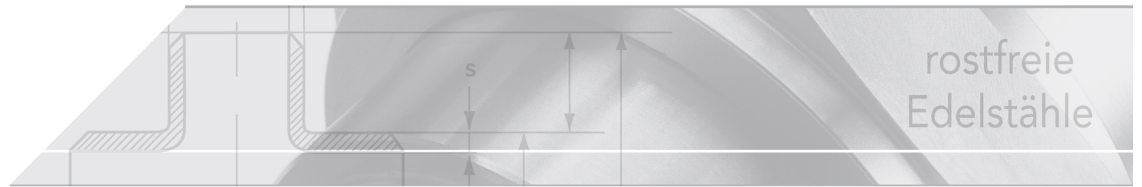


### technický list výrobku

Anschl.	DN	D3	L	Rd	SW	Art.-Nr.
DIN	10	22	24	28x1/8"	17	HYGI-GBS010-DIN-N
DIN	15	22	24	34x1/8"	17	HYGI-GBS015-DIN-N
DIN	20	22	24	44x1/6"	17	HYGI-GBS020-DIN-N
DIN	25	40	24	52x1/6"	27	HYGI-GBS025-DIN-N
DIN	32	40	24	58x1/6"	27	HYGI-GBS032-DIN-N
DIN	40	40	24	65x1/6"	27	HYGI-GBS040-DIN-N
DIN	50	40	24	78x1/6"	27	HYGI-GBS050-DIN-N
DIN	65	48	28	95x1/6"	32	HYGI-GBS065-DIN-N
DIN	80	48	28	110x1/4"	32	HYGI-GBS080-DIN-N
DIN	100	48	30	130x1/4"	32	HYGI-GBS100-DIN-N
ISO	10	22	24	34x1/8"	17	HYGI-GBS010-ISO-N
ISO	15	22	24	44x1/6"	17	HYGI-GBS015-ISO-N
ISO	20	40	24	52x1/6"	27	HYGI-GBS020-ISO-N
ISO	25	40	24	58x1/6"	27	HYGI-GBS025-ISO-N
ISO	32	40	24	65x1/6"	27	HYGI-GBS032-ISO-N
ISO	40	40	24	78x1/6"	27	HYGI-GBS040-ISO-N
ISO	50	48	28	95x1/6"	32	HYGI-GBS050-ISO-N
ISO	65	48	28	110x1/4"	32	HYGI-GBS065-ISO-N
ISO	80	48	30	130x1/4"	32	HYGI-GBS080-ISO-N

dostupné jakosti: na poptávku

Systémy &gt; DIN 11864/DIN 11854 &gt; trubková šroubení &gt; Hyg. spoje DIN 11853-1 &gt; Závitové zaslepovací hrdlo



## Blind-Collar Flange DIN 11853-2

Hygiene-Flange Connection

### Features

Type	Description
Pipe Dimensions	DIN 11866 Row A + B as well as DIN 11850 (Row 2)
Form A	Produced with punctuation for O-Ring
Sizes	DIN-DN 10-150, ISO-DN 8-100
Material	AISI 316L/ 1.4404, optional 1.4435 (Ferrit < 0,5%)
Surfaces	Ra inner < 0,8 µm, Ra outer < 1,6 µm (H3)

### DIN 11864 <> DIN 11853

The aseptic and flange connections according to DIN 11864-2 respectively DIN 11853-2 are compatible. The blind parts are only available in the DIN 11853-2 version.

### Assembling

When assembling the product the O-ring is inserted in the grooved flange which will steadily hold the O-ring by itself. The collar flange is then placed against it so that both flanges engage each other. The flanges and the O-ring are therefore coaxially centered. After that, the screws are inserted through the holes drilled in the flanges so that the heads of the screws are on the outer surface of one flange and the threads of the screws stick out of the other flange. The nuts are screwed onto these threads and evenly tightened until the faces of the flanges come into contact with each other. The O-ring is deformed by this so that a smooth port free of dead space and a sealed connection are produced.

## Operating Pressure

at 140°C and with the usage of suitable seals

Pipe-AØ	bar
up to 41 mm	max. 25 bar
42,4 - 101,6 mm	max. 16 bar
114,3 - 154,0 m	max. 10 bar