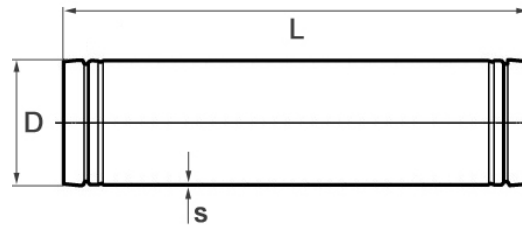


Rohr, längsnahtgeschweißt  
beidseitig rollgenutet  
StrengThin™ 100 Nutprofil  
>System Victaulic<

[short name: V100\\*](#)

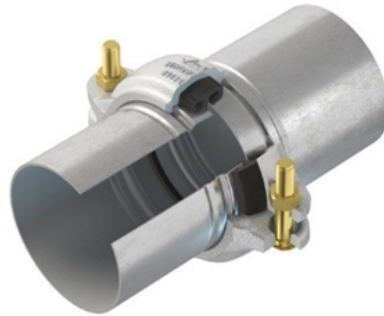


### technical product sheet

| L    | D     | s   | Norm       | kg      |
|------|-------|-----|------------|---------|
| 6000 | 60,3  | 2,0 | EN 10217-7 | 17,520  |
| 6000 | 76,1  | 2,0 | EN 10217-7 | 22,260  |
| 6000 | 88,9  | 2,0 | EN 10217-7 | 26,110  |
| 6000 | 114,3 | 2,0 | EN 10217-7 | 33,740  |
| 6000 | 139,7 | 2,0 | EN 10217-7 | 41,370  |
| 6000 | 139,7 | 3,0 | EN 10217-7 | 61,620  |
| 6000 | 168,3 | 2,0 | EN 10217-7 | 49,960  |
| 6000 | 219,1 | 3,0 | EN 10217-7 | 98,000  |
| 6000 | 273,0 | 3,0 | EN 10217-7 | 121,740 |
| 6000 | 323,9 | 3,0 | EN 10217-7 | 144,600 |

available material: 1.4307, 1.4571

Systems > Victaulic > StrengThin™ 100 > Rohr



## Victaulic® StrengThin™ 100 System

thin-walled pipes made of stainless steel

Pipe wall strength at 10 bar

| Size          | [s] max. | [s] min. |
|---------------|----------|----------|
| DN 50/ 60,3   | 2,7 mm   | 1,6 mm   |
| DN 65/ 76,1   | 2,7 mm   | 1,6 mm   |
| DN 80/ 88,9   | 2,7 mm   | 1,6 mm   |
| DN 100/ 114,3 | 2,7 mm   | 1,6 mm   |
| DN 125/ 139,7 | 3,0 mm   | 2,0 mm   |
| DN 150/ 168,3 | 3,0 mm   | 2,0 mm   |
| DN 200/ 219,1 | 2,9 mm   | 2,0 mm   |
| DN 250/ 273,0 | 2,9 mm   | 2,0 mm   |
| DN 300/ 323,9 | 2,9 mm   | 2,0 mm   |

Pipe wall strength at 16 bar

| Size          | [s] max. | [s] min. |
|---------------|----------|----------|
| DN 50/ 60,3   | 2,7 mm   | 1,6 mm   |
| DN 65/ 76,1   | 2,7 mm   | 1,6 mm   |
| DN 80/ 88,9   | 2,7 mm   | 1,6 mm   |
| DN 100/ 114,3 | 2,7 mm   | 1,6 mm   |
| DN 125/ 139,7 | 3,0 mm   | 2,0 mm   |
| DN 150/ 168,3 | 3,0 mm   | 2,0 mm   |
| DN 200/ 219,1 | 3,7 mm   | 3,0 mm   |
| DN 250/ 273,0 | 4,2 mm   | 3,0 mm   |
| DN 300/ 323,9 | 4,5 mm   | 3,0 mm   |

