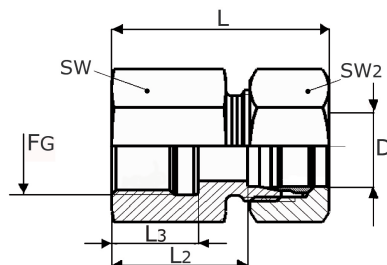
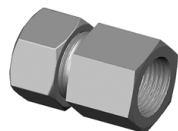


přímé našroubovací šroubení

[zkratka označení: 2353-GAI N*](#)

DIN 2353, EN ISO 8434-1

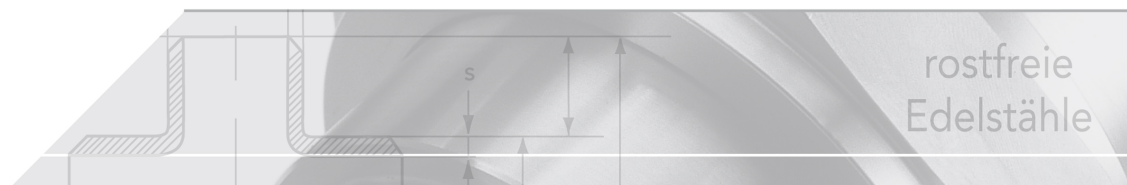


technický list výrobku

Reihe	NPT	D	PN	L	L2	L3	SW	SW2	kg	Art.-Nr.
leicht	1/8"	6	315	34	19,0	12	14	14	0,000	2353-GAI06LN01
leicht	1/4"	6	315	38	25,0	17	19	14	0,053	2353-GAI06LN02
leicht	1/4"	8	315	39	26,0	17	19	17	0,066	2353-GAI08LN02
leicht	1/4"	10	315	39	25,5	17	19	19	0,063	2353-GAI10LN02
leicht	1/4"	12	315	40	26,0	17	19	22	0,074	2353-GAI12LN02
leicht	3/8"	8	315	43	29,0	17	24	17	0,100	2353-GAI08LN03
leicht	3/8"	10	315	44	30,0	17	27	19	0,000	2353-GAI10LN03
leicht	3/8"	12	315	45	30,0	17	24	22	0,105	2353-GAI12LN03
leicht	1/2"	8	315	46	32,0	22	27	17	0,046	2353-GAI08LN04
leicht	1/2"	10	315	47	34,0	22	27	19	0,125	2353-GAI10LN04
leicht	1/2"	12	315	47	32,0	22	27	22	0,121	2353-GAI12LN04
leicht	1/2"	15	315	48	33,0	22	27	27	0,000	2353-GAI15LN04
leicht	1/2"	18	315	49	32,5	22	27	32	0,170	2353-GAI18LN04
leicht	3/4"	15	315	53	38,0	23	36	27	0,000	2353-GAI15LN06
leicht	3/4"	18	315	52	35,5	23	36	15	0,252	2353-GAI18LN06
leicht	1"	28	160	61	44,0	27	41	41	0,000	2353-GAI28LN08
leicht	1 1/4"	35	160	62	40,5	28	55	50	0,000	2353-GAI35LN10
leicht	1 1/2"	42	160	65	44,0	29	60	60	0,000	2353-GAI42LN12
schwer	1/4"	6	630	41	26,0	17	19	17	0,000	2353-GAI06SN02
schwer	1/4"	8	630	41	24,5	17	19	19	0,000	2353-GAI08SN02
schwer	1/4"	12	630	41	26,5	17	22	24	0,000	2353-GAI12SN02
schwer	3/8"	10	630	47	31,0	17	22	22	0,000	2353-GAI10SN03
schwer	3/8"	12	630	46	27,5	17	24	24	0,119	2353-GAI12SN03
schwer	1/2"	10	630	48	32,0	22	27	22	0,000	2353-GAI10SN04
schwer	1/2"	12	630	50	34,0	22	27	24	0,139	2353-GAI12SN04
schwer	1/2"	14	630	50	33,0	22	30	27	0,000	2353-GAI14SN04
schwer	1/2"	16	400	50	31,5	22	27	30	0,000	2353-GAI16SN04
schwer	3/4"	20	400	59	37,5	23	36	36	0,000	2353-GAI20SN06
schwer	3/4"	22	160	56	38,5	23	36	36	0,000	2353-GAI22LN06
schwer	1"	25	400	65	41,0	27	41	46	0,000	2353-GAI25SN08
schwer	1 1/4"	30	400	70	43,5	28	55	50	0,000	2353-GAI30SN10
schwer	1 1/2"	38	250	74	43,0	28	60	60	0,000	2353-GAI38SN12

dostupné jakosti: na poptávku

Systémy > zářezné kroužky > přímé šroubovací spojky > vnitřní šroubení > závit NPT



Straight thread connection made of stainless steel

DIN 2353, EN ISO 8341-1

Screw-on thread

NPT-thread acc. to ANSI / ASME B1.20.1-1983

Nominal pressures PN

Series	Pipe OØ	PN
L (light)	6 - 15	250
	18 - 22	160
	28 - 42	100
S (heavy)	6 - 14	630
	16 - 25	400
	30 - 38	250

The nominal pressure is a commonly used rounded-off number referring to the pressure that is listed for static loads with a 3- or 4-fold safety margin.

Pressure deductions

Temperature	Pressure deduction
+50°C	4,5%
+100°C	11%
+200°C	20%
+300°C	29%
+400°C	33%

For seal materials such as FPM and Viton, the temperature limits of -25 to +200°C must be noted.

All values specified are guidelines that can also be influenced to a greater or lesser extent by the medium.