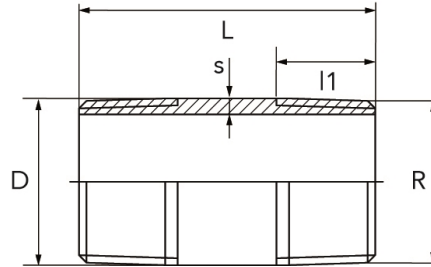
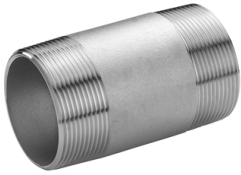


barrel nipple EN 10241

 short name: [R.210*](#)


technical product sheet

R	L	l1	D	s	PN	kg	Art.-Nr.
1/4"	40	11,0	13,5	2,35	100	0,035	DN-014-PED
3/8"	40	12,0	17,2	2,35	100	0,000	DN-038-PED
1/2"	60	15,0	21,3	2,65	100	0,058	DN-012-PED
3/4"	60	17,0	26,9	2,65	100	0,071	DN-034-PED
1"	60	20,0	33,7	3,25	100	0,109	DN-100-PED
1 1/4"	80	22,0	42,4	3,25	64	0,000	DN-114-PED
1 1/2"	80	22,0	48,3	3,25	64	0,230	DN-112-PED
2"	100	26,0	60,3	3,65	64	0,411	DN-200-PED
2 1/2"	100	28,0	76,1	3,65	40	0,000	DN-212-PED
3"	120	35,0	88,9	4,05	40	0,000	DN-300-PED

available material: 316L

Threaded fittings > fittings > PN 50/ 100 > nipples > R-210 > Standard



Barrel nipple

male thread on both sides

Version

DIN EN 10241:2000 (old DIN 2982)

manufactured from welded tube

Stainless steel material-Nr. 1.4404 optional 1.4571

with PED-pressure approval (Pressure level PN 100/ 40)

Thread DIN EN 10226-1:2004 (old DIN 2999) or ISO 7-1 (Connections sealed in the threads)

Outer thread tapered, Code R

