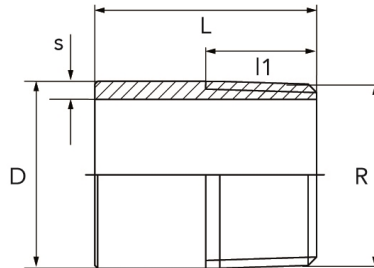


welding nipple EN 10241

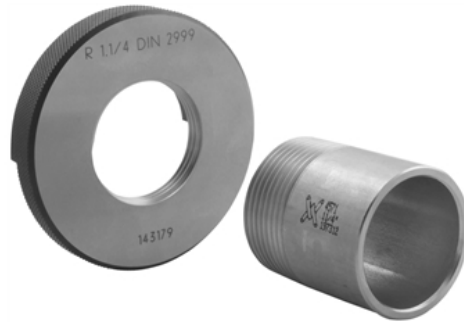
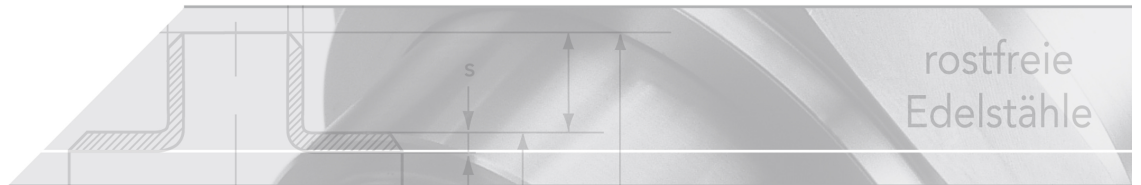
 short name: [R.208*](#)


technical product sheet

R	D	L	l1	s	PN	kg	Art.-Nr.
1/4"	13,5	30	11,0	2,35	100	0,017	AN-014-PED
3/8"	17,2	30	12,0	2,35	100	0,023	AN-038-PED
1/2"	21,3	35	15,0	2,65	100	0,050	AN-012-PED
3/4"	26,9	40	17,0	2,65	100	0,050	AN-034-PED
1"	33,7	40	20,0	3,25	100	0,082	AN-100-PED
1 1/4"	42,4	50	22,0	3,25	64	0,130	AN-114-PED
1 1/2"	48,3	50	22,0	3,25	64	0,150	AN-112-PED
2"	60,3	55	26,0	3,65	64	0,220	AN-200-PED
2 1/2"	76,1	60	28,0	3,65	40	0,320	AN-212-PED
3"	88,9	65	35,0	4,05	40	0,461	AN-300-PED

available material: 316L

Threaded fittings > fittings > PN 50/ 100 > nipples > R-208 > Standard



Welding nipple made of stainless steel

R-208

- > acc. to EN 10241
- > manufactured from longitudinally welded tube acc. to EN 10217-7
- > Material 1.4404 optional 1.4571
- > BSP-thread acc. to ISO 7/1 (old DIN 2999)
- > with PED pressure approval

Design pressure

Size	Mpa
up to 1"	10,0
from 1 1/4"	6,4
from 2"	4,0
from 5"	1,6

