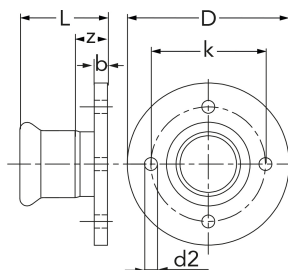


flange adaptor

[zkratka označení: N.19*](#)

lisovací,

povolení DVGW pro pitnou vodu

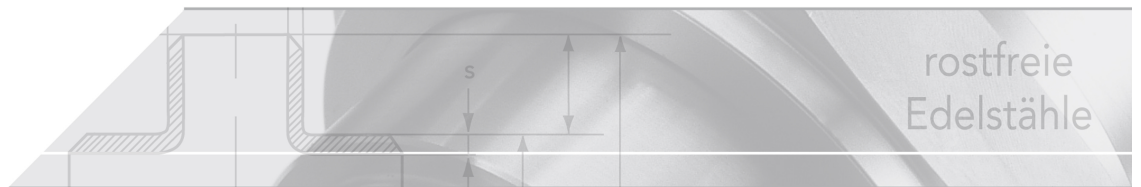


technický list výrobku

DW	Abnahme	DN	Rohr-AD	b	D	k	L	z	d2	Anz
EPDM	DVGW	15	15,0	14	95	65	45,0	25,0	14	4
EPDM	DVGW	15	18,0	14	95	65	47,0	27,0	14	4
EPDM	DVGW	20	22,0	16	105	75	52,0	31,0	14	4
EPDM	DVGW	25	28,0	16	115	85	56,0	34,0	14	4
EPDM	DVGW	32	35,0	18	140	100	66,0	40,0	18	4
EPDM	DVGW	40	42,0	18	150	110	74,0	44,0	18	4
EPDM	DVGW	50	54,0	18	165	125	85,0	51,0	18	4
EPDM	DVGW	65	76,1	20	185	145	132,0	78,0	18	4
EPDM	DVGW	80	88,9	20	200	160	146,0	91,0	18	8
EPDM	DVGW	100	108,0	20	220	180	169,0	100,0	18	8
FKM	-	15	15,0	14	95	65	45,0	25,0	14	4
FKM	-	15	18,0	14	95	65	47,0	27,0	14	4
FKM	-	20	22,0	16	105	75	52,0	31,0	14	4
FKM	-	25	28,0	16	115	85	56,0	34,0	14	4
FKM	-	32	35,0	18	140	100	66,0	40,0	18	4
FKM	-	40	42,0	18	150	110	74,0	44,0	18	4
FKM	-	50	54,0	18	165	125	85,0	51,0	18	4
FKM	-	65	76,1	20	185	145	132,0	78,0	18	4
FKM	-	80	88,9	20	200	160	146,0	91,0	18	8
FKM	-	100	108,0	20	220	180	169,0	100,0	18	8

dostupné jakosti: 316L

Systeme > Pressfittings > Flansche > PN 10/16



NUMEPRESS

Stainless steel press-system

Properties

Unsolvable press connection acc. to EN 10088

M profile, system independent

Nominal pressure for water applications max. 16 bar

Stainless steel 1.4404 (AISI 316L)

Flanges acc. to DIN EN 1092-1 PN 10/16

DVGW-approval for water

ÖVGW-certificate for water installations

SVGW SSI GE - certificate for water distribution systems

FM APPROVED

Gaskets

Material	Colour	Application	Temperature
EPDM	black	water	-20° - +110° C
FKM	green	solar, oil, compressed ai	-30° - +180° C
FPM	red	steam	-20° - +200° C

