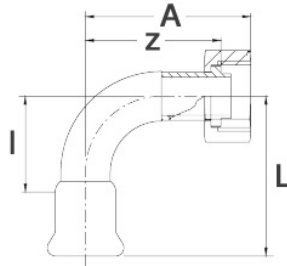


90° F angle adaptor
with swivel nut
press fitting, M profile
DVGW-approval for water

[short name: N.35*](#)

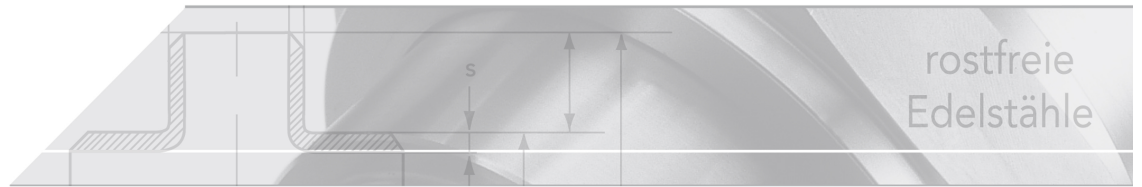


technical product sheet

Rohr-AD	Rp	L	I	z	DW	Abnahme
15,0	1/2"	48,0	28	39	EPDM	DVGW
15,0	1/2"	48,0	28	39	FKM	-
18,0	1/2"	52,0	32	53	EPDM	DVGW
18,0	1/2"	52,0	32	53	FKM	-
18,0	3/4"	52,0	32	51	EPDM	DVGW
18,0	3/4"	52,0	32	51	FKM	-
22,0	3/4"	61,0	40	61	EPDM	DVGW
22,0	3/4"	61,0	40	61	FKM	-
28,0	1"	71,5	49	73	EPDM	DVGW
28,0	1"	71,5	49	73	FKM	-
35,0	1 1/4"	86,0	60	89	EPDM	DVGW
35,0	1 1/4"	86,0	60	89	FKM	-
42,0	1 1/2"	112,0	82	115	EPDM	DVGW
42,0	1 1/2"	112,0	82	115	FKM	-
54,0	2"	105,0	72	107	EPDM	DVGW
54,0	2"	105,0	72	107	FKM	-

available material: 316L

Systeme > Pressfittings > Bogen > mit Gewinde > 90° mit Ü-Mutter



NUMEPRESS

Stainless steel press-system

Properties

Unsolvable press connection acc. to EN 10088

M profile, system independent

Nominal pressure for water applications max. 16 bar

Stainless steel 1.4404 (AISI 316L)

Female thread acc. to EN 10226

DVGW-approval for water

ÖVGW-certificate for water installations

SVGW SSI GE - certificate for water distribution systems

FM APPROVED

Gaskets

Material	Colour	Application	Temperature
EPDM	black	water	-20° - +110° C
FKM	green	solar, oil, compressed ai	-30° - +180° C
FPM	red	steam	-20° - +200° C

