

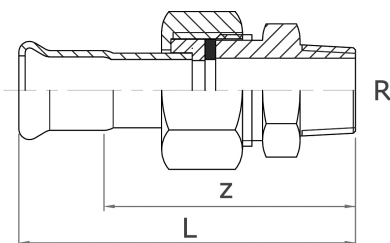
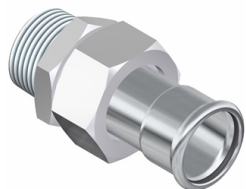
šroubení, lis. / Ag

[zkratka označení: N.41*](#)

lisovací fitinka, M profil

ploché těsnění

povolení DVGW pro pitnou vodu

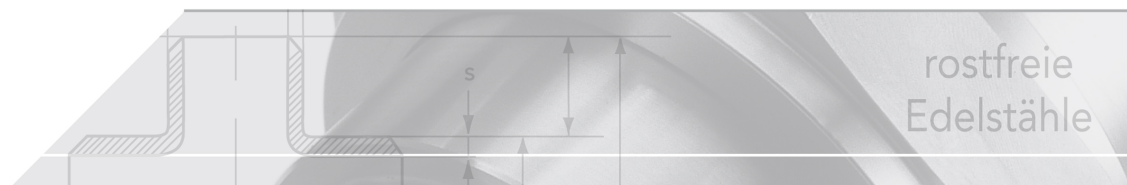


technický list výrobku

Mutter	Rohr-AD	R	L	z	DW	Abnahme
Edelstahl	15,0	1/2"	72	52	EPDM	DVGW
Edelstahl	15,0	1/2"	72	52	FKM	-
Edelstahl	15,0	3/4"	75	55	EPDM	DVGW
Edelstahl	15,0	3/4"	75	55	FKM	-
Edelstahl	18,0	1/2"	74	54	EPDM	DVGW
Edelstahl	18,0	1/2"	74	54	FKM	-
Edelstahl	18,0	3/4"	77	57	EPDM	DVGW
Edelstahl	18,0	3/4"	77	57	FKM	-
Edelstahl	22,0	3/4"	84	64	EPDM	DVGW
Edelstahl	22,0	3/4"	84	64	FKM	-
Edelstahl	22,0	1"	79	58	EPDM	DVGW
Edelstahl	22,0	1"	79	58	FKM	-
Edelstahl	28,0	1"	91	69	EPDM	DVGW
Edelstahl	28,0	1"	91	69	FKM	-
Edelstahl	28,0	1 1/4"	94	72	EPDM	DVGW
Edelstahl	28,0	1 1/4"	94	72	FKM	-
Edelstahl	35,0	1 1/4"	105	79	EPDM	DVGW
Edelstahl	35,0	1 1/4"	105	79	FKM	-
Edelstahl	42,0	1 1/2"	113	83	EPDM	DVGW
Edelstahl	42,0	1 1/2"	113	83	FKM	-
Edelstahl	54,0	2"	134	100	EPDM	DVGW
Edelstahl	54,0	2"	134	100	FKM	-
Messing	18,0	3/4"	78	56	EPDM	DVGW
Messing	22,0	3/4"	69	48	EPDM	DVGW
Messing	22,0	1"	72	51	EPDM	DVGW
Messing	28,0	1"	73	50	EPDM	DVGW
Messing	35,0	1 1/4"	78	52	EPDM	DVGW
Messing	42,0	1 1/2"	85	55	EPDM	DVGW
Messing	54,0	2"	100	65	EPDM	DVGW

dostupné jakosti: 316L, V4A

Systeme > Pressfittings > Verschraubungen > PRESS x AG



NUMEPRESS

Stainless steel press-system

Properties

Unsolvable press connection acc. to EN 10088

M profile, system independent

Nominal pressure for water applications max. 16 bar

Stainless steel 1.4404 (AISI 316L)

Union nut made of stainless steel, optional made of brass

3-part construction, flat sealing

Male thread, conical acc. to DIN EN 10226/ ISO 7/1

DVGW-approval for water

ÖVGW-certificate for water installations

SVGW SSI GE - certificate for water distribution systems

FM APPROVED

Gaskets

Material	Colour	Application	Temperature
EPDM	black	water	-20° - +110° C
FKM	green	solar, oil, compressed ai	-30° - +180° C
FPM	red	steam	-20° - +200° C

