

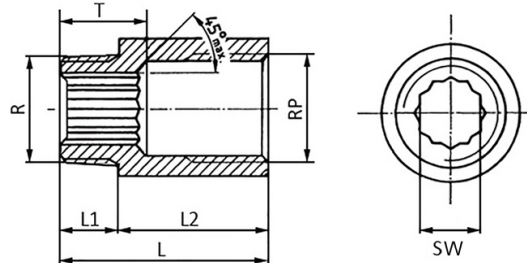
Tap Extension

[short name: GV*](#)

analog to DIN 3523

Inside Polygon (Double-Hex.)

Threads acc. to ISO 7-1



technical product sheet

R	Rp	L	L1	L2	T	SW	kg	Art.-Nr.
1/2"	1/2"	30,5	13	17,5	17	12,5	0,062	GV-012-017
1/2"	1/2"	33,0	13	20,0	17	12,5	0,069	GV-012-020
1/2"	1/2"	38,0	13	25,0	17	12,5	0,083	GV-012-025
1/2"	1/2"	43,0	13	30,0	17	12,5	0,093	GV-012-030
1/2"	1/2"	53,0	13	40,0	17	12,5	0,118	GV-012-040
1/2"	1/2"	63,0	13	50,0	17	12,5	0,122	GV-012-050
3/4"	3/4"	34,0	14	20,0	18	17,5	0,088	GV-034-020
3/4"	3/4"	39,0	14	25,0	18	17,5	0,101	GV-034-025
3/4"	3/4"	44,0	14	30,0	18	17,5	0,113	GV-034-030
3/4"	3/4"	54,0	14	40,0	18	17,5	0,141	GV-034-040
1"	1"	50,0	20	30,0	23	22,5	0,174	GV-100-030
1"	1"	60,0	20	40,0	23	22,5	0,206	GV-100-040

available material: ask

Industriearmaturen > Kugelhähne > mit Antrieb > pneumatisch > Zubehör > Gewindeverlängerung

full description:

Tap Extension
 analog to DIN 3523
 Inside Polygon (Double-Hex.)
 Threads acc. to ISO 7-1
 Knurled male thread