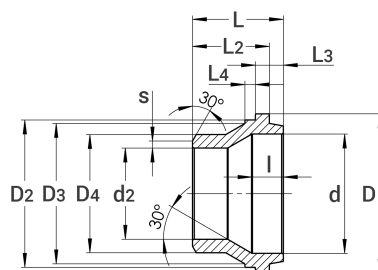


Einlegeteil, konisch - SE
für Verschraubung ISO 4144

[zkratka označení: VKES.I*](#)



technický list výrobku

Zoll	d1	d2	s	D	d	L	l	L2	L3	L4	D2	D3	Art.-Nr.
DN 1/4"	13,5	10,0	1,0	24,0	14,0	18,5	6,0	14,5	6,5	2,5	21,0	17	VKES-014-I
DN 3/8"	17,2	12,7	1,5	28,0	17,0	20,5	6,0	16,5	7,0	2,5	25,0	22	VKES-038-I
DN 1/2"	21,3	16,7	1,6	33,5	22,0	21,5	7,0	17,5	7,0	3,0	29,5	27	VKES-012-I
DN 3/4"	26,9	20,0	2,0	39,5	28,0	24,0	7,0	20,0	7,0	3,0	36,0	33	VKES-034-I
DN 1"	33,7	26,0	2,0	45,5	34,0	26,0	9,0	22,0	8,0	3,0	42,0	40	VKES-100-I
DN 1 1/4"	42,4	36,0	2,0	55,5	42,5	27,5	8,5	23,0	8,5	3,0	51,5	50	VKES-114-I
DN 1 1/2"	48,3	42,0	2,0	62,5	49,0	30,0	10,0	25,5	10,0	3,0	58,5	57	VKES-112-I
DN 2"	60,3	52,3	2,0	77,5	61,0	33,5	11,5	28,5	11,0	3,5	72,5	70	VKES-200-I
DN 2 1/2"	76,1	68,1	2,0	96,5	75,5	39,0	12,0	33,0	12,0	4,0	91,0	86	VKES-212-I
DN 3"	88,9	78,9	2,0	109,0	88,5	43,0	13,0	37,0	13,0	4,0	104,0	100	VKES-300-I
DN 4"	114,3	104,3	2,0	136,0	114,0	55,0	13,0	48,0	13,0	5,0	131,0	122	VKES-400-I

dostupné jakosti: na poptávku

Gewindefittings > Verschraubungen > konisch dichtend > PN 20 (ISO 4144) > Wissenswertes > Einzelteile > Einlegeteil - SE



konisch dichtend (20° - Konus)