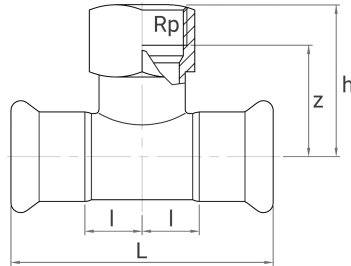


tee branch female outlet  
press fitting, M profile

[short name: N.12BIG\\*](#)

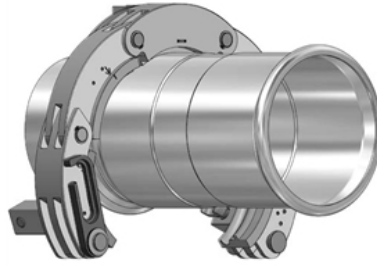


### technical product sheet

DW	Rohr-AD	Rp	s	L	l	h	h2	Kontur
EPDM	139,7	1/2"	2,0	394	99	101	87,5	M
EPDM	139,7	3/4"	2,0	394	99	106	90,5	M
EPDM	139,7	2"	2,0	394	99	123	94,0	M
EPDM	168,3	3/4"	2,0	514	139	120	105,0	M
EPDM	168,3	2"	2,0	514	139	138	109,0	M

available material: ask

Systeme > Pressfittings > BIG PRESS > T mit Muffenabgang



## NUMEPRESS

Stainless steel press-system

### Properties

Unsolvable press connection acc. to EN 10088

M profile, system independent

Nominal pressure for water applications max. 16 bar

Stainless steel 1.4404 (AISI 316L)

Female thread acc. to DIN EN 10226

DVGW-approval for water

ÖVGW-certificate for water installations

SVGW SSI GE - certificate for water distribution systems

FM APPROVED

### Gaskets

Material	Colour	Application	Temperature
EPDM	black	water	-20° - +110° C
FKM	green	solar, oil, compressed ai	-30° - +180° C
FPM	red	steam	-20° - +200° C

