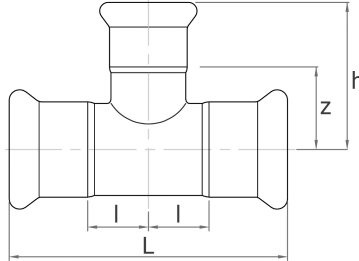


reducing tee
press fitting, M profile

[short name: 15BIG*](#)

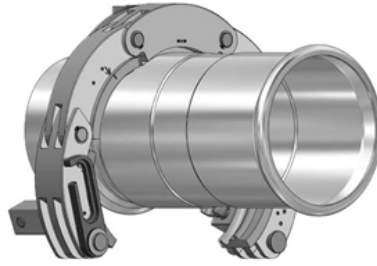
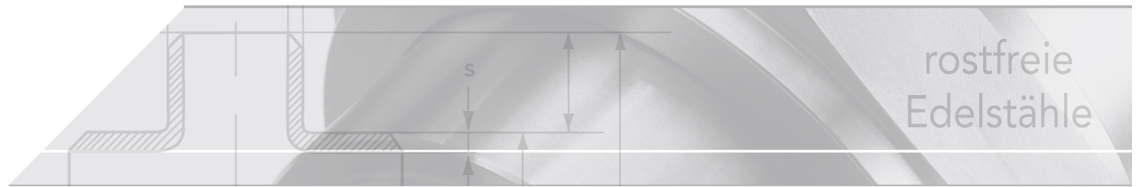


technical product sheet

Rohr-AD	s	L	l	z	h	DW
139,7 x 76,1 x 139,7	2,0	394	99	88	143	EPDM
139,7 x 88,9 x 139,7	2,0	394	99	95	153	EPDM
139,7 x 108 x 139,7	2,0	394	99	96	167	EPDM
168,3 x 76,1 x 168,3	2,0	514	139	103	157	EPDM
168,3 x 88,9 x 168,3	2,0	514	139	110	167	EPDM
168,3 x 108 x 168,3	2,0	514	139	111	182	EPDM
168,3 x 139,7 x 168,3	2,0	514	139	113	211	EPDM

available material: ask

Systeme > Pressfittings > BIG PRESS > Red.-T-Stück



NUMEPRESS

Stainless steel press-system

Properties

Unsolvable press connection acc. to EN 10088

M profile, system independent

Nominal pressure for water applications max. 16 bar

Stainless steel 1.4404 (AISI 316L)

DVGW-approval for water

ÖVGW-certificate for water installations

SVGW SSIIG - certificate for water distribution systems

FM APPROVED

Gaskets

Material	Colour	Application	Temperature
EPDM	black	water	-20° - +110° C
FKM	green	solar, oil, compressed ai	-30° - +180° C
FPM	red	steam	-20° - +200° C

