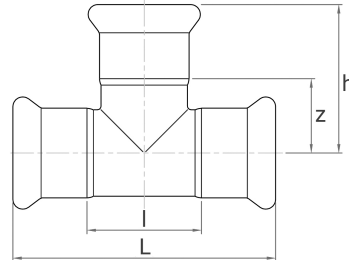


equal tee
press fitting, M profile

[short name: N.16BIG*](#)

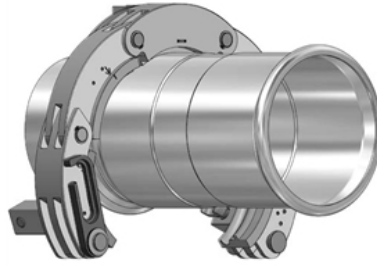


technical product sheet

DW	Rohr-AD	s	L	l	z	h	Art.-Nr.
EPDM	139,7	2,0	394,0	99,0	99,0	197,0	PRFI-TS-139-NX20
EPDM	168,3	2,0	514,0	139,0	118,0	235,0	PRFI-TS-168-NX20

available material: ask

Systeme > Pressfittings > BIG PRESS > T-Stück



NUMEPRESS

Stainless steel press-system

Properties

Unsolvable press connection acc. to EN 10088

M profile, system independent

Nominal pressure for water applications max. 16 bar

Stainless steel 1.4404 (AISI 316L)

DVGW-approval for water

ÖVGW-certificate for water installations

SVGW SSIIG - certificate for water distribution systems

FM APPROVED

Gaskets

Material	Colour	Application	Temperature
EPDM	black	water	-20° - +110° C
FKM	green	solar, oil, compressed ai	-30° - +180° C
FPM	red	steam	-20° - +200° C

