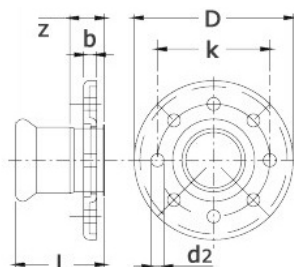
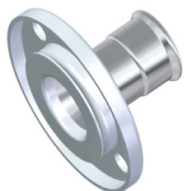


točivé příruby

[zkratka označení: 28BIG*](#)

lisovací fitinka, M profil

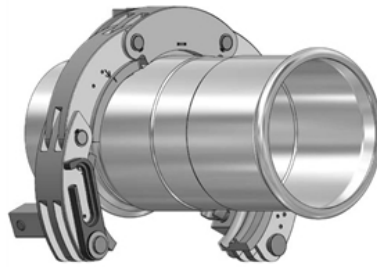
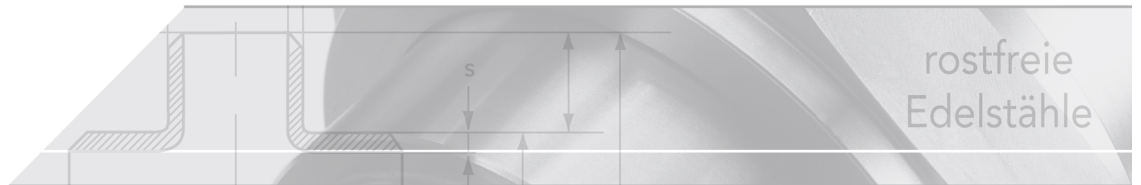


technický list výrobku

DW	DN	Rohr-AD	s	b	D	k	L	z	d2	Anz
EPDM	125	139,7	2,0	22	250	210	138,0	41,0	18	8
EPDM	150	168,3	2,0	24	285	240	171,0	54,0	22	8

dostupné jakosti: na poptávku

Systeme > Pressfittings > BIG PRESS > Losflansch



NUMEPRESS

Stainless steel press-system

Properties

Unsolvable press connection acc. to EN 10088

M profile, system independent

Nominal pressure for water applications max. 16 bar

Stainless steel 1.4404 (AISI 316L)

Loose plate flanges pressed from sheet metal, material 1.4301

Flange dimensions following DIN EN 1092-1 Typ 02 PN 10/16

DVGW-approval for water

ÖVGW-certificate for water installations

SVGW SSI GE - certificate for water distribution systems

FM APPROVED

Gaskets

Material	Colour	Application	Temperature
EPDM	black	water	-20° - +110° C
FKM	green	solar, oil, compressed ai	-30° - +180° C
FPM	red	steam	-20° - +200° C

